

**Creation of selected geo-spatial open data set for Pudukkottai Grama Panchayat
using Community Participatory Mapping**



IIT PALAKKAD

Project Identification No. 2022-097-CE-ATP-KINFRA-SP

Project Grant: Western India KINFRA Ltd

Duration: 01-02-2022 to 31-03-2022

Principal Investigator: Dr. Athira P, Assistant Professor, IIT Palakkad

Co- Investigators: Dr. Sahely Bhadra, Assistant Professor, IIT Palakkad & Mr. Nikhil R R, Project Coordinator, IIT Palakkad

OSM Volunteers: Mujeeb Rahman k, Muhammed Yaseen S S, Arjun Gangadharan, Manoj, Jinoy Tom Jacob, Jothish babu, Kelvin, Vishnu shaji, Rajaneesh, Sanu Raj, Anoop and Dr. Akshay Dinesh

Resource Persons: Palazhi Udayakumar, Ward Member 01, Jayakumar C, Ward Member 02, Nisha C V, Ward Member 03, Priya V, Ward Member 04, P B Girish, Ward Member 05, K Siddharthan, Ward Member 06, Albert S, Ward Member 07, Ananthi P, Ward Member 08, Sanoop S, Ward Member 09, Praseedha N (President), Sunitha Raveendran, Ward Member 11, Bindhu C S, Ward Member 12, Minmini R, Ward Member 13, Sujith P (Welfare Standing Committee Chairman), Jonsi C J, Ward Member 14, N. Shanmughan, Ward Member 15, Subhash M, Ward Member 16, Jayashree S, Ward Member 17, Krishnanunni M, Ward Member 18, Ajish K (Vice President)Ward 19, Sardha A (Development Standing Committee Chairperson), Rajeshwari C K, Ward Member 22, Geetha S (Health, Education development Chairperson), Shahabaz, Resource Person Ward 2, Anoop P, Resource Person Ward 1, K Kannan, Resource Person Ward 3, Unni, Resource Person Ward 4, Sasikala, Resource Person Ward 6, Prajitha, Resource Person Ward 8, Joseph, Resource Person Ward 9, Jiji, Resource Person Ward 9, Muniyamma, Resource Person Ward 10, Karunan, Resource Person Ward 11, Prasanna, Resource Person Ward 12, Murukanandan, Resource Person Ward 13, Akhil P, Resource Person Ward 14, Selvan, Resource Person Ward 15, Rathi, Resource Person Ward 17, Shibu das, Resource Person Ward 18, Muralidharan, Resource Person Ward 19, Praveen, Resource Person Ward 20, Sreenath, Resource Person Ward 21, Nitya Mol, Resource Person Ward 22, Jayan K, Resource Person Ward 23, Sajeev, Venoli Padashekaram, Gopikrishnan, Pudussery Padashekaram, Pavithran, Sooryachira Padashekaram, Annamala, Puthurpadam Padashekaram, Muralidharan, Kolayakode Padashekaram, Sivadasan, Kogattupadam Padashekaram, Mani, Kanjikode Padashekaram, Prabhakaran, Chellankavu Padashekaram, Chakrapani, Valiyeri Padashekaram, Amaldas, Kadukampallam Padashekaram, Sahedevan,

Chullimada Padashekaram, Jayakanthan, Konamputhur Padashekaram, Haridas, Madathukaranchalla Padashekaram, Aravindakshan, Nelissery Padashekaram, Babu, Attapallam Padashekaram, Devadasan, East Attapallam Padashekaram, Karuppaswamy, Puthanchalla Padashekaram, Rajakrishnaswamy, Canalpirivu Padashekaram, Hridayaswamy, Attupathy Padashekaram, Chinnaswamy, Poolampara Padashekaram, Xavier, Kulinkad Padashekaram, Ambujakshan, Secretary, Pudussery GP, Alexis, Agriculture Officer, Pudussery GP, Manju TA, Pudussery GP

Associations: Unnat Bharat Abhiyan, OpenStreetMap, Open Data Kerala, Geominds, Pudussery Grama Panchayat

Project Timeline

Sl No:	Particular	Date
1	Discussion with OpenStreetMap Community Members regarding the proposed project plan	31-01-2022
2	Meeting with Pudussery GP Secretary for the project detailing and submission of asset register data request	01-02-2022
3	Pudussery Grama Panchayat Board Approval for the project	11-02-2022
4	Meeting with the Pudussery Panchayat Board Members for briefing the project and invitation for the workshop	25-02-2022
5	Workshop for the OSM Volunteers and Resource Persons	05-03-2022 & 06-03-2022
6	Field level data collection	12-03-2022 to 19-03-2022

7	Field level data collection & Quality Checking	25-03-2022 to 29-03-2022
8	Cartography and Web Interface Initial draft	30-03-2022
9	Final submission	30-06-2022

Activity Report

1. Armchair Mapping of Pudusserly Gram Panchayat

Armchair mapping (also known as remote mapping) means contributing to OpenStreetMap without leaving your chair. Armchair mapping contributions do not involve a surveying phase where the user physically visits the place they are mapping. Without this, armchair mapping workflows will typically cover a larger area more rapidly, but with disadvantages in terms of data accuracy, detail, and community building.

A total of 18 student volunteers took part in the armchair exercise. The project prioritized mapping of Building Footprints within the Panchayat boundary as its first step in the mapping process. As a result of this, the volunteers made 4613 change-sets, mapped 33165 buildings totaling 33478 map edits.

#1317 | TeachOSM

PUDUSSERY GRAMA PANCHAYAT - BUILDING FOOTPRINTS MAPPING

India

TASKS BY STATUS



More mapping needed
Available for mapping
Locked for mapping
Ready for validation
Locked for validation
Finished
Unavailable

1
More mapping needed
0
Locked for validation

0
Available for mapping
518
Finished

0
Locked for mapping
1
Unavailable

457
Ready for validation

EDITS



4,613
Changesets



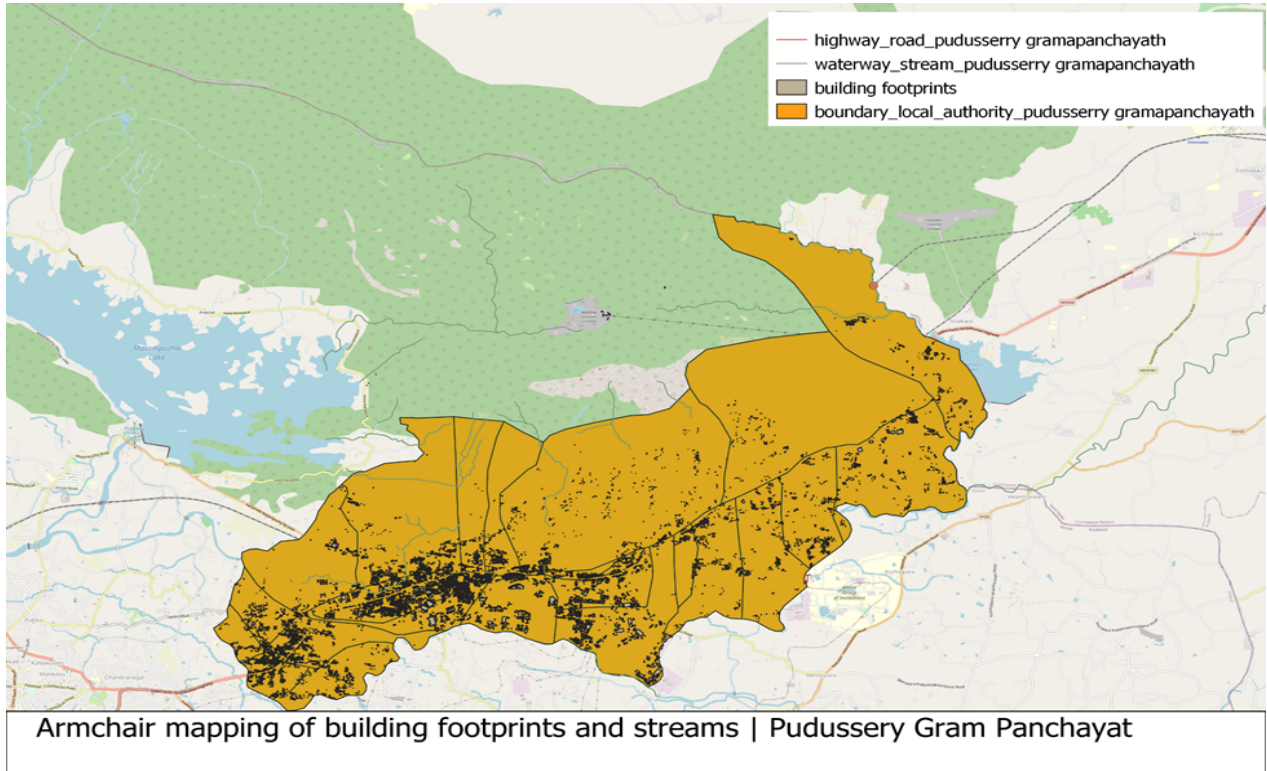
33,478
Total map edits



33,165
Buildings mapped



36
Km road mapped



2. Workshop cum orientation for the ward members and resource persons of Pudussery Grama Panchayat, 5 &6 March 2022

An workshop cum orientation program was conducted at IIT Palakkad NILA Campus on 05 & 06 March 2022 to plan and discuss the plan of action for the field level activities. The Pudussery Panchayat officials, Resource Persons, OpenStreetMap Volunteers attended the workshop. The workshop oriented the Grama Panchayat representatives, Resource persons regarding the geo spatial data collection in OpenStreetMap platform.

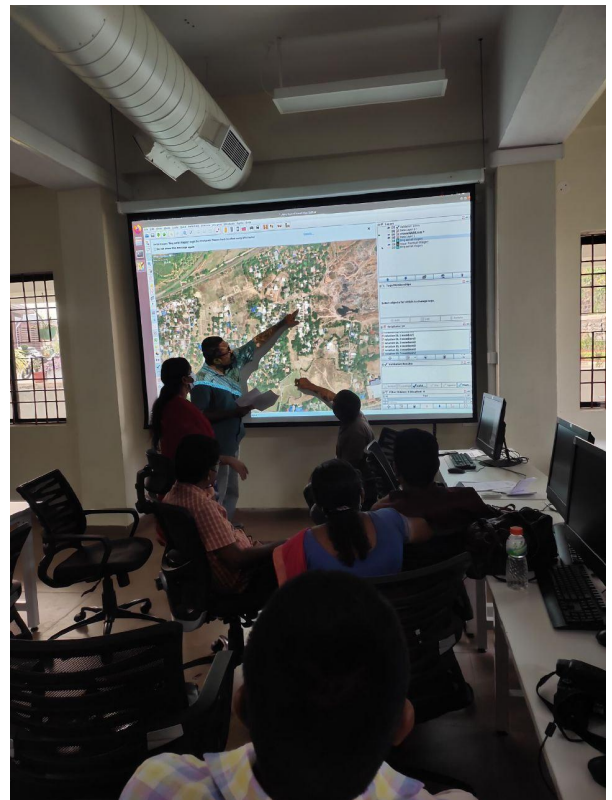


3. Field level data collection for the creation of selected open geo spatial data sets, March 11- Mar 29, 2022

The field data collection was conducted based on the following checklists

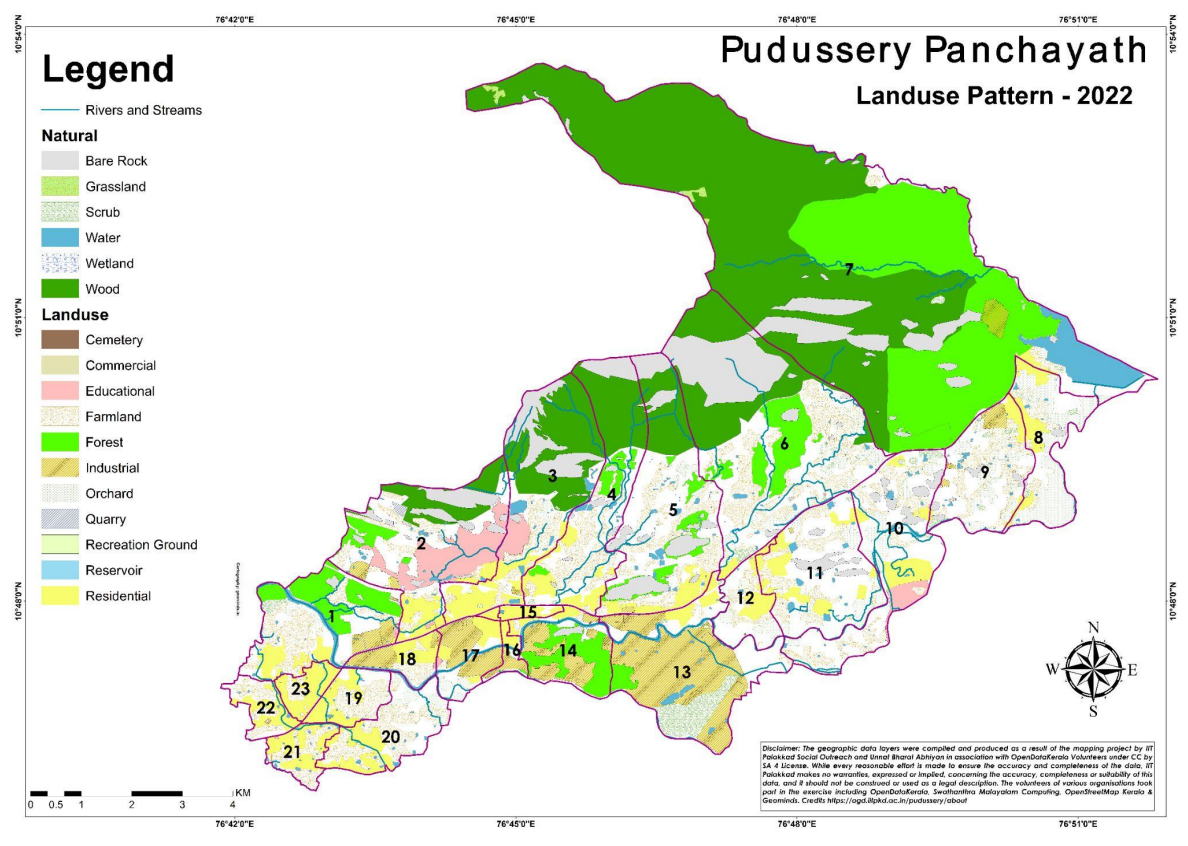
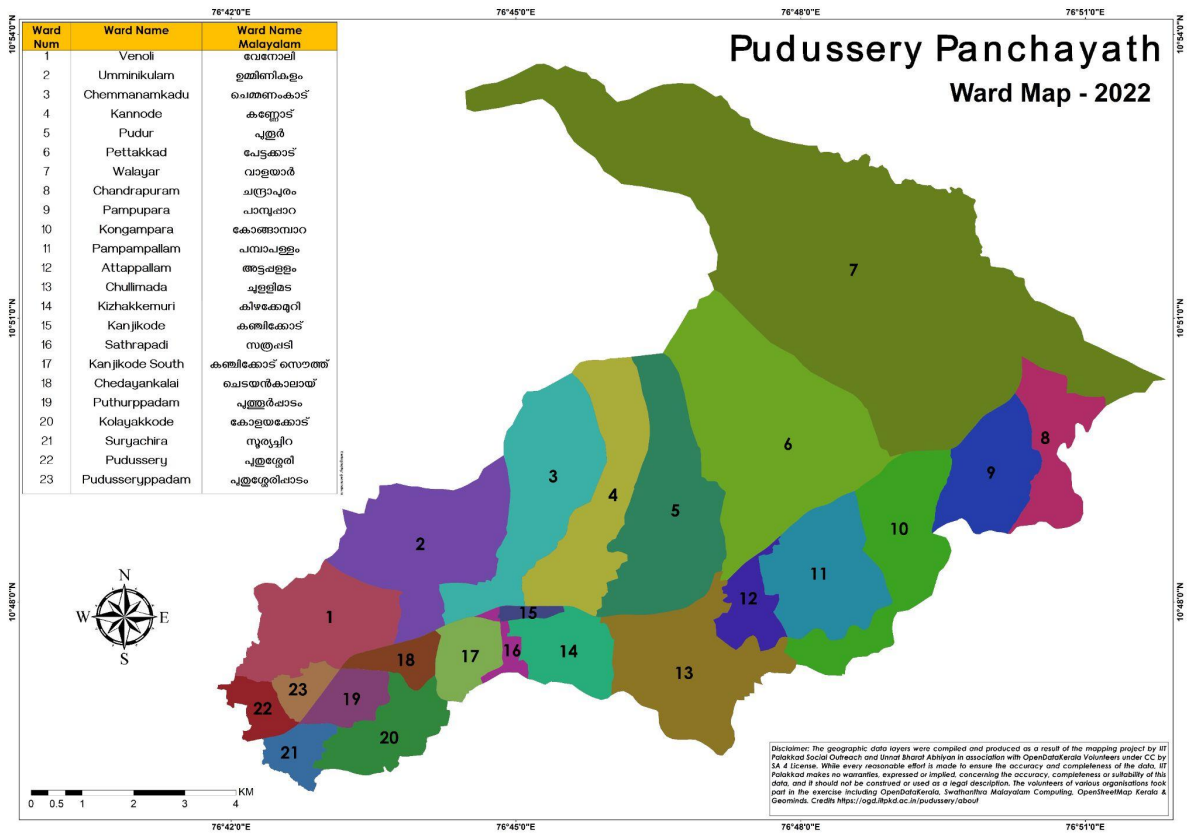
- Ward Boundary
- Road - (NH,SH,MDR, Important Panchayath Roads, Bridge, Bust Stop, Auto/Taxi) -
- Water - (Pond, Stream,Reservoir. Panchayath Well, drinking water project ,canal)
- Land Use - (Paddy, Coconut, Vegetable, Teak, Forest, Industrial, Quarry)
- Building - Public Govt Institutions, Industries Large, Bank, Health & Veterinary, School, PDS, Religious, Forest, Petrol Pump, Public Toilets, Toddy/Bar, Janakeya Hotel, Take a Break, Milk Society, Village Office, Community Hall)
- Electrical - Transformer, Mobile Tower, Substation, Solar, Wind

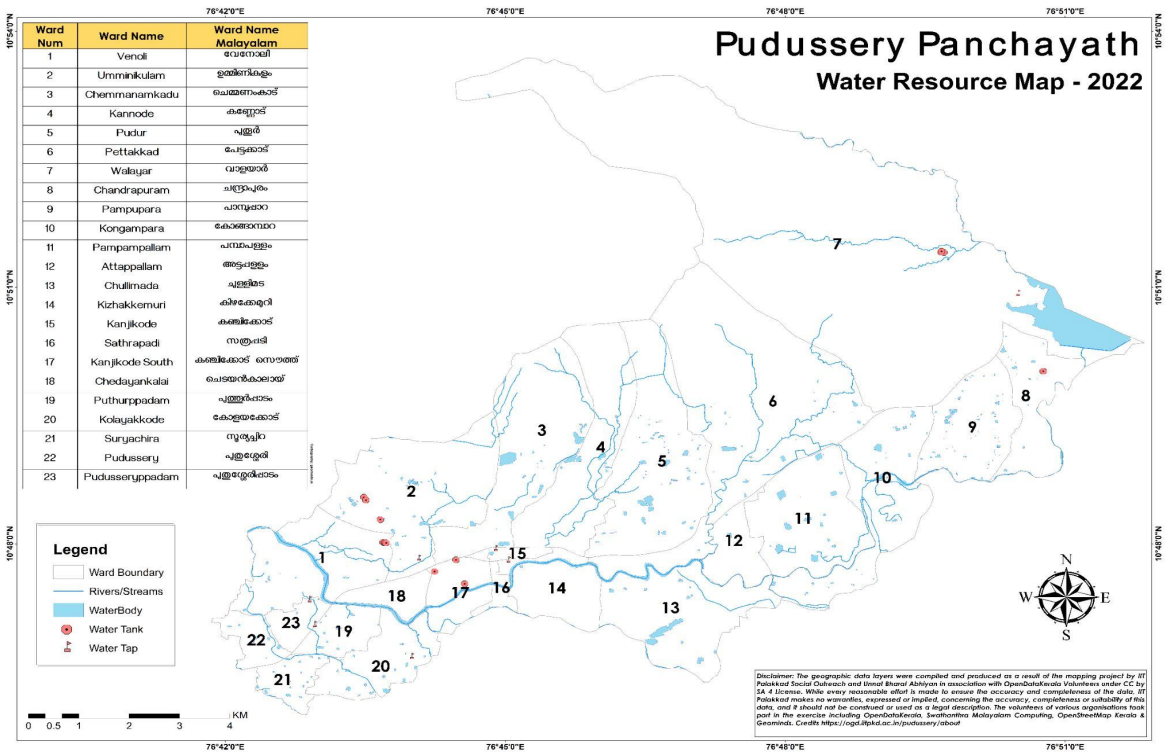
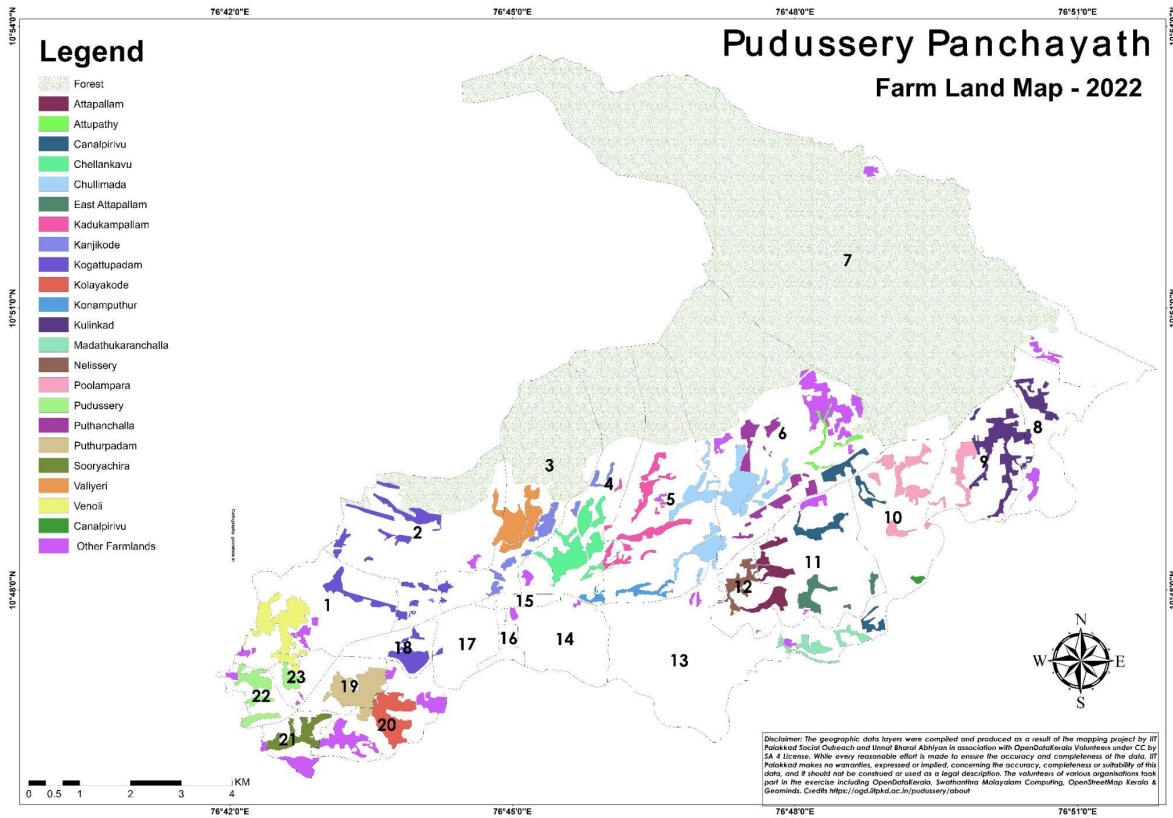
The teams were divided into groups and did field level activities in all the 23 wards along with the resource persons of each ward.





Cartography





Web Interface

Website: <https://ogd.iitpkd.ac.in/>

